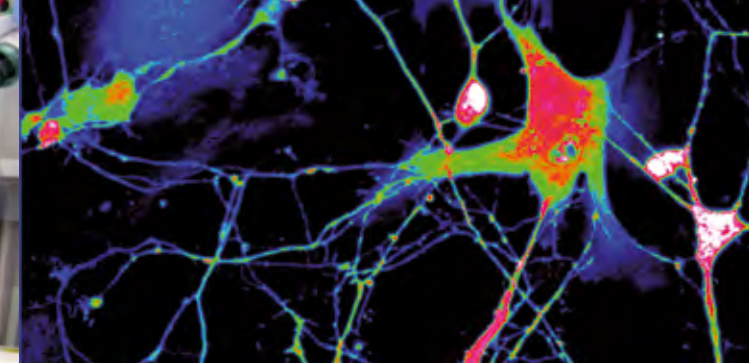




**MED** FACULTY OF MEDICINE



## → Otto von Guericke University Magdeburg

The Otto von Guericke University Magdeburg focuses on engineering and natural sciences, economics and management as well as medicine. The university, which was founded in 1993, has also found expansion to be essential in the areas of social sciences and humanities in order to meet the challenge of today's knowledge society. Over 14,000 students, including over 1,600 international students, are enrolled in over 80 programmes across the nine faculties. The young and dynamic, high-profile university offers state-of-the-art facilities, an excellent student/teacher ratio and practical, hands-on education.

The university's main areas of research and transfer – the neurosciences, dynamic systems / systems biology, the automotive industry and medical technology – are interdisciplinary in nature and strengthened on a lasting basis by the neighbouring non-university research institutes.

Thanks to its position at the heart of Germany and its history, Otto von Guericke University is seen as a bridge between Western and Eastern Europe. This is particularly evident in the comprehensive internationalization of its teaching and research.

### Areas of Excellence in Research:

- Neuroscience
- Dynamic Systems
- Automotive

### Otto von Guericke, Founder of Experimental Physics

The university bears the name of Otto von Guericke. The famous son of the city of Magdeburg lived from 1602 to 1686 and found fame well beyond the German borders thanks to his ground-breaking research into the vacuum. The university aspires to teach and research in the tradition of this great scientist, philosopher and engineer and to continue with his humanist work.



## A Faculty Overview

### A hands-on education

Magdeburg's Faculty of Medicine fully implements the Medical Licensure Act for Physicians of 27.6.2002 as amended from time to time. As the largest hospital in northern Saxony-Anhalt, it guarantees excellent conditions for a patient-focused and practical medical education. This includes integrated, case and problem-oriented lectures, as well as systematic teaching and independent learning. Interdisciplinary research jointly fostered by clinics and institutes is of particular interest for student education. In addition to major projects, a variety of individual research projects are carried out in the different institutes, which serve as a good basis for student dissertations. A series of exchange programs with partner institutions abroad offer the opportunity to study or to carry out research in Europe, Asia and America. Students have excellent chances of spending several months studying abroad, for example in the US, Mexico, Chile, France, Lithuania, Austria, Poland, Bulgaria, the Netherlands or Turkey. A number of scholarships are available.

Starting winter semester 2015/16 the Medical Faculty will also offer the M. Sc. course "Immunology".

### A compact learning environment

Numerous new appointments of professors from around Germany show that the Faculty of Medicine is an attractive place for teaching and conducting research. Particular value is placed on close interaction between students and professors. This is promoted by the relatively small number of students, with around 200 students being enrolled every year. Should problems arise, individual appointments can be made with the professors. The course organizational structure with fixed seminar groups guarantees every medical student internship and class schedules that make it possible for their degree to be completed within the standard study duration. A very active faculty council campaigns on student concerns.

The contiguous campus in the south part of Saxony-Anhalt's capital is a great advantage. It boasts 26 clinics and 20 institutes. Only the gynaecology clinic is housed off-campus. A student hall of residence is located right next to the campus.

## → Research Profile

### The research profile is characterised by the following major areas of research:

- Immunology including the molecular medicine of inflammation and
- Neuroscience

The research focuses are shaped by a variety of group sponsorship instruments and research cooperations and therefore define the strategic direction of the faculty. It is worth emphasising the close cooperation between the two associations which becomes clear in the special research areas 854 and 779 and graduate school 1167, among other things. In the interests of improving translation and transfer of the research results, promoting young scientists and taking into consideration demographic change, the faculty has also developed further activities within and beyond these focus areas.

As a result, in the "Immunology, Infectology and Inflammation" Health Campus, known as GC-I3, the emphasis has been placed on the diagnostics and treatment of widespread diseases. The CBBS health campus deals with the prevention and treatment of dementia-related illnesses.

Both focus areas of the faculty are also involved in the BMBF research campus of the university for the development of medical technology. Based on the current development of the faculty, potential areas have been identified for increased levels of further development. These are the areas of "Translational Clinical Oncology", "Musculoskeletal Reconstructive Surgery" and "Cardiovascular Medicine".

All the faculties named research activities are substantially supported by the contractual cooperations with non-university research institutions such as the Leibniz Institute for Neurobiology (LIN), the Helmholtz Institute for Infection Research (HZI), the Max Planck Institute for Dynamics of Complex Technical Systems (MPI) and the Center for Neurodegenerative Diseases (DZNE).

## → University Clinical Center

Magdeburg's University Clinical Center, with its campus in the South of the state capital, has been attracting patients from northern Saxony-Anhalt for many years, and increasingly from other federal states. Its clinics offer a range of medical services including state-of-the-art diagnostics and highly specialized treatments.

The opening of the clinical center's complex for surgery / aspects of internal medicine and neuromedicine (building 60) in the summer of 2003 meant a concentration of nearly 500 beds, numerous functional rooms and a central emergency room. This considerably improved the foundations for interdisciplinary collaboration between the non-surgical and surgical fields and increased the quality of medical care.

The history of the University Clinical Center goes back to 1890 with the construction of the Sudenburg hospitals. In 1954 the Magdeburg Academy of Medicine (MAM) was founded. This transformed the urban hospitals into a medical school. Ever since then, budding physicians have been studying human medicine here. On 3 October 1993 the Academy of Medicine and associated clinic became part of Otto von Guericke University Magdeburg. Since 1 January 2006, Magdeburg University Clinical Center has been a public institution with legal capacity.

## → Skillslab

### Skillslab – "MAMBA" - Magdeburg Training Center for Basic Medical Skills

Since 2009, the Faculty of Medicine in Magdeburg has been home to a Skillslab. This facility enables medical students to polish their practical skills independently in addition to during their scheduled classes. They are supervised by doctors and student assistants.

The following courses are already offered or will be offered in the future:

- basic clinical examination skills, in which the abdomen and thorax of practice partners are examined under the guidance / with the help of a student assistant.
- taking of blood samples
- ECG course
- orthopaedic examination
- surgical suturing techniques and surgeon's knots
- catheter skills, catheter fitting using models, laparoscopy and microscopy in the urology teaching room
- auscultation course using the "SAM" auscultation trainer
- lumbar puncture
- cardiopulmonary resuscitation (CPR)
- bandages and wound dressing course
- sonography course
- neurological examination course
- ophthalmic examination course
- OP Course





## → Curriculum Medicine

Medical training is based on the new Medical Licensure Act for Physicians (ÄAppO) dated 27. June 2002, as amended most recently on 2. August 2013. The program includes lectures (L), internships (I), courses (C) and seminars (S).

### Preclinical Curriculum Semesters 1–4

Physics, Chemistry and Biology for Physicians; Physiology; Biochemistry/Molecular Biology; Macroscopic and Microscopic Anatomy; Medical Psychology and Medical Sociology; Introduction to Clinical Medicine; Introduction to Careers in Medicine; Medical Terminology and elective

- minimum of 784 hours L, I, C, S
- 16 hours of first aid training
- 3 months of nursing service

### First part of the Medical Examination:

written (multiple choice = MC) and oral

### Clinical Curriculum Semesters 5–10

#### A Subjects:

General Medicine; Anaesthesiology; Occupational Medicine; Social Medicine; Ophthalmology; Surgery; Dermatology; Venereology; Gynaecology, Obstetrics; Ear, Nose and Throat Medicine; Human Genetics; Hygiene, Microbiology, Virology; Internal Medicine; Paediatrics; Clinical Chemistry, Laboratory Diagnostics; Neurology; Orthopaedics; Pathology; Pharmacology, Toxicology; Psychiatry and Psychotherapy; Psychosomatic Medicine and Psychotherapy; Forensic Medicine; Urology and elective

#### B Interdisciplinary areas:

Epidemiology, Medical Biometry and Medical Information Technology; History, Theory, Medical Ethics; Health Economics, the Health System, Public Health; Infectious Diseases, Immunology; Clinical-Pathological Conference; Clinical Environmental Medicine; Medicine of Aging and of the Elderly; Emergency Medicine; Clinical Pharmacology/Pharmacotherapy; Prevention, Health Promotion; Imaging Systems, Radiation Therapy, Radiation Protection; Rehabilitation; Physical Medicine; Naturopathy; Palliative Medicine and Pain Therapy

#### Clinical Traineeship:

4 months

#### University Examinations (A and B) between the first part of the Medical Examination and the start of the practical year

#### Second Part of the Medical Examination: written

#### Practical Year: Semesters 11–12:

- 16 weeks Internal Medicine
- 16 weeks Surgery
- 16 weeks General Medicine or electively one of the remaining clinical practical subjects

#### Third Part of the Medical Examination: oral-practical

#### End of studies at the university:

State Examination and Physician Licensing

## Applications and Admission Requirements

### Prerequisites for studying human medicine:

General higher education entrance qualification certificate or other qualification granting access to higher education as recognized by the Ministry of Science and Economics of the state of Saxony-Anhalt. Experienced professionals in the medical occupations who do not hold a qualification granting access to higher education may take a special examination.

### Applications:

In Germany, admission to courses in Human Medicine is subject to restrictions. In Magdeburg, enrolment takes place annually for the start of the winter semester.

Places to study medicine for German applicants, for foreign applicants with a German qualification granting access to higher education (foreign nationals educated in the German school system) and for foreign applicants from the European Union and the EEA (Iceland, Liechtenstein, Norway) are awarded by the German Foundation for University Admission (hochschulstart.de). Applications must be submitted directly to the Foundation for University Admission (D-44128 Dortmund, www.hochschulstart.de), quoting the name of the relevant university.

### Applicants from Abroad:

The decisive admission criteria are the grade average obtained in the qualification granting access to higher education and excellent knowledge of the German language. The application deadline is 15 July for the following winter semester (uni-assist). Comprehensive information on making an application is available from the International Office of the Faculty of Medicine or from uni-assist e.V. The International Office also has information for applicants to a higher semester as well as graduates from abroad.

### Application deadlines:

by 15 July (cut-off date);  
by 31 May (cut-off date) for candidates who obtained their entrance qualification prior to 16 Jan

### Applications and enquiries can be forwarded to:

Otto von Guericke University Magdeburg  
Faculty of Medicine  
Dean of Studies Office  
Leipziger Strasse 44  
D-39106 Magdeburg  
Tel. +49 (0) 391 671 5762, 671 5764  
Fax +49 (0) 391 671 5393  
Email: studienkdekanat@med.ovgu.de  
www.med.uni-magdeburg.de

### Applicants from Abroad:

Otto von Guericke University Magdeburg  
Faculty of Medicine  
International Office  
Haus 2, Leipziger Strasse 44  
D-39106 Magdeburg  
Tel. +49 (0) 391 671 5143  
Fax +49 (0) 391 671 5393  
Email: aaa@med.ovgu.de  
www.med.uni-magdeburg.de/fme/aaa, www.uni-assist.de

### Student Hall of Residence Applications to:

Magdeburg Student Union  
Public Law Institution  
Resident Housing Department  
Postfach 4053, D-39015 Magdeburg  
www.studentenwerk-magdeburg.de

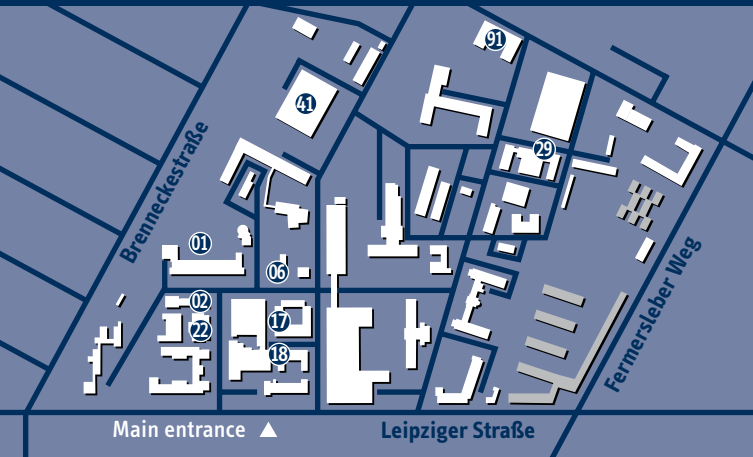
## PROGRAM INFORMATION

# Faculty of Medicine



## FACULTY OF MEDICINE CAMPUS

- |  |                            |
|--|----------------------------|
| 18 Medical Directorate                               | 41 Central Medical Library |
| 22 Audio-Visual Media Centre                         | 41 Canteen                 |
| 18 Dean's Office                                     | 16 Personnel Department    |
| 91 Academic Counselling for Integrative Neuroscience | 18 Care Directorate        |
| 01 Academic Counselling for Medicine                 | 01 Research Unit           |
| 18 Administrative Directorate                        | 02 Dean of Studies Office  |
| 17 Medical Computer Centre                           | 06 Central Pharmacy        |
|  | 22 Central Lecture Theater |



Published by:  
Otto von Guericke University Magdeburg  
President  
Edited by: The Department of Publication and Public Relations  
Picture credits: if not otherwise specified: the archive of the University of Magdeburg and its faculties  
Edition: 03/2015

